

Multi-Range MULTIMETER

Wired and Calibrated

Features

- 0.25 DCV Ideal for Transistor Circuit
- 26 Working Ranges
- Buzzer For Low Ohms-Continuity Test
- " OFF " Position Transit And Storage

The STARKIT Model MK-4 multimeter is a modern, compact, portable instrument of futuristic design that must be seen to be fully appreciated. The ranges have been selected to make it extremely versatile in production, servicing and maintenance of modern electronic equipment. It will measure a wide range of voltages, currents, resistances and audio power.

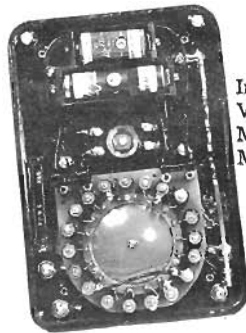
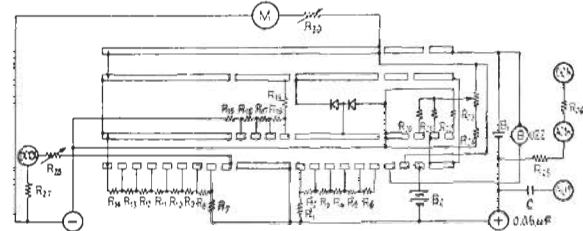
Only the best of components have been incorporated in the assembly to assure highest accuracy and long service. The voltage multipliers are high grade deposited carbon resistors. The current shunts are 1% wire wound resistors. The meter is sensitive but rugged using a powerful magnet and clear-view scale that is protected by an unbreakable plastic front. A specially designed and constructed low-resistance switch with positive indexing and a unique three-finger knob is used for easy and rapid selection of ranges. Heavy duty, low resistance test leads with positive holding banana plugs are included.

The STARKIT MK-4 is designed to measure DC voltage from .005 to 1000 volts; AC voltage from .05 to 1000 volts; DC current from 1 micro amp to 12 amps; resistance from 10 ohms to 60 megohms; audio power levels from -20 to 56 db on a 600 ohm line. The more frequently used ranges are measured by using only two banana jacks and the range switch to speed selection and changing ranges.



STARKIT MODEL MK-4

SCHEMATIC DIAGRAM



Inside View of Model MK-4

Technical Specifications

SENSITIVITY

30,000 ohms/Volt DC
15,000 ohms/Volt AC

RESISTANCE

From 10 ohms to 60 megohms
3 ranges; (350, 35K, 350K)
at centre scale

BATTERIES

Burgess Y10 and Burgess Z,
or equivalent (1.5v, 1.5v)

RANGES D. C. VOLTS

0-0.25, 1, 2.5, 10, 25, 100
250, 500, 1000

DECIBELS

-20 to +56 DB (ODB = 1 MW
on 600 ohm line)

ACCESSORIES

1 Pair Test Leads, Instruction
Manual.

RANGES A. C. VOLTS

0-2.5, 10, 25, 100, 250, 500
1000

OUTPUT

In conjunction with AC Volts

DIMENSIONS

4-1/4" x 6-1/4" x 2-1/8"

RANGES D. C. CURRENT "BUZZER"

0-0.05, 5, 50, 500, DCMA
12 DCA

Low ohms circuit testing

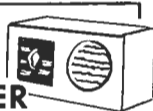
WEIGHT

Net Wt. 1-1/2 lbs. Ship Wt.
2-1/4 lbs.

IMPORTED

E2016 F9

For
The
BEGINNER
Or
PROFESSIONAL



SCHEMATIC DIAGRAM

